

The Nebraska Department of Environment and Energy (NDEE) ONE RED Program is offering rebates to replace agricultural irrigation pump diesel engines with all-electric equipment. The diesel engine may be replaced with a new electric motor or by connecting an existing submersible pump directly to the electric grid. To ensure emissions reductions are achieved through this program, **the diesel engine being replaced must be permanently disabled within 90 days of replacement.** Funding for this year's program is made possible by a Climate Pollution Reduction Implementation Grant from the U.S. Environmental Protection Agency.

NDEE will reimburse 60% of the cost of a new electric motor, installation, and required electrical infrastructure (including electric utility costs) up to a maximum rebate of \$23,000. **Expenses incurred before you have signed a project agreement with NDEE will not be reimbursed.**

The diesel engine owner is responsible for the remainder of the project costs (mandatory cost-share). Replacement incentives offered by your electric service provider may be used to pay a portion of the mandatory cost-share. No other federal grant funds may be used to cover any portion of the mandatory cost-share.

NDEE anticipates awarding rebates for 50 irrigation engine replacements. Individual applicants may submit one application for a rebate for one engine. NDEE will determine the number of irrigation engine rebates after evaluating all applications.

WHO IS ELIGIBLE?

- Any Nebraska farming operation that owns diesel engines used to power agricultural irrigation pumps.
- The applicant must have owned the engine to be replaced for at least two years prior to submission of the application.
- The applicant (or your organization) must be in compliance with all Nebraska environmental laws and with the Department's regulations and permits at all Nebraska locations.

ELIGIBLE ENGINES

- There are no engine model year or horsepower requirements for eligibility.
- The diesel engine must be in operating condition and have operated at least 250 hours each year during the past two years. A pre-replacement inspection may be made to verify the engine condition.
- The diesel engine must have a legible serial number stamped into the block, listed on an engine data tag affixed to the engine, or on other documentation provided by the manufacturer.
- The diesel engine must have a remaining service life of at least three years in the owner's estimation.

ELIGIBLE REPLACEMENTS

- The diesel irrigation engine must be replaced by an electric motor or by connecting an existing submersible pump to the electric grid.
- The replacement equipment must perform the same function in the same location as the original diesel engine.

OTHER REQUIREMENTS:

- The new equipment cannot be used to expand the applicant's current inventory but must replace a diesel engine that is currently operational and in use. **The replaced engine must be disabled (scrapped) within 90 days of replacement.**

- You must submit documentation of ownership and at least 250 engine operating hours each year for the two previous years.
- One set of quotes for the replacement motor and/or electric equipment, installation, and electric utility connection and equipment costs must be submitted with the application. Quotes must include the wellsite location (township, range, section, and quarter section).
- If selected for an award, you must maintain ownership of the new motor and/or electric equipment for at least five years from the date of purchase and continue to operate it in Nebraska. If the new motor and/or electric equipment is sold before the end of the five-year period, moved out of state, or used for purposes other than specified under this program, you must notify NDEE and you may be required to return up to the full amount of the rebate to NDEE. The amount required to be returned is at the discretion of NDEE and will be determined on a case-by-case basis.
- Installation must be performed by a licensed electrical contractor.
- Recipients may be required to file annual reports of operating hours for the duration of the agreement.

APPLICATION PROCESS AND TIMELINE:

To qualify for a ONE RED Irrigation Engine rebate, submit the attached Application Form and the supporting documents listed in the Application Materials Checklist before the application deadline of **5:00 pm on Thursday January 16, 2025**. Only **one application per applicant** will be accepted, and **a maximum of one rebate is allowed per application**.

Applications will only be accepted if complete and received in the NDEE Lincoln office on or before 5:00 pm January 16, 2025.

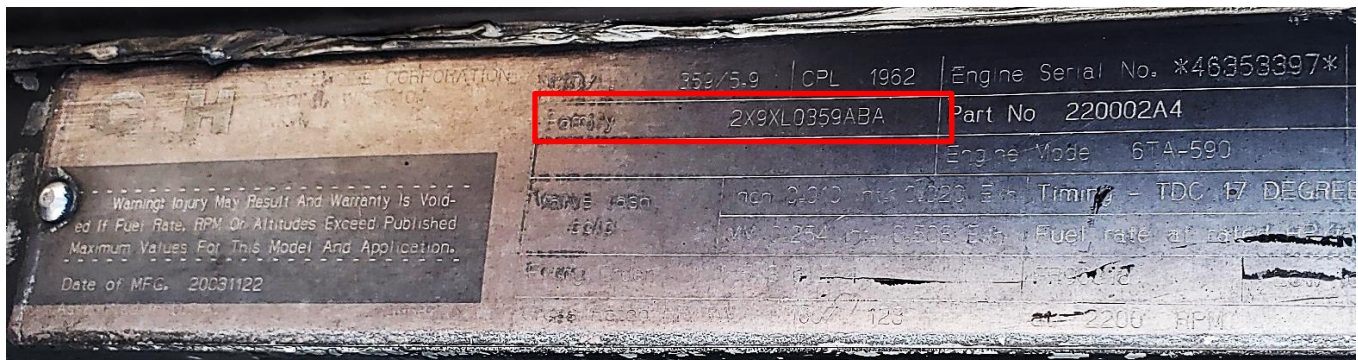
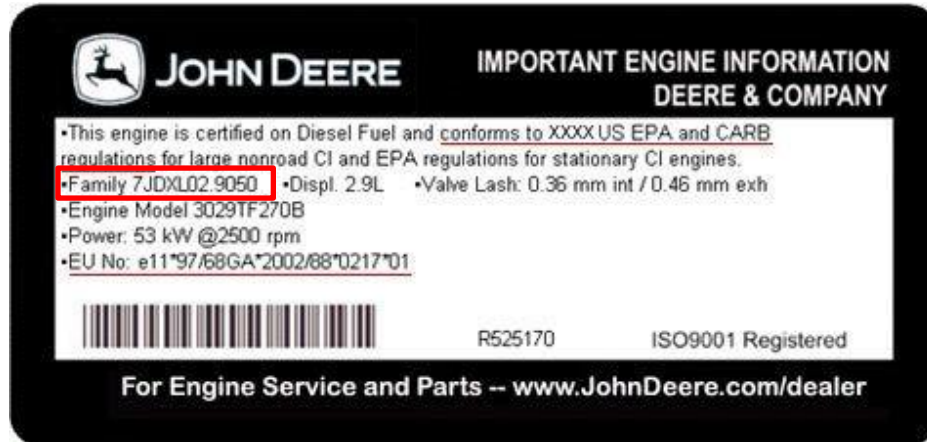
APPLICATION MATERIALS CHECKLIST

Use the following checklist to ensure you have submitted all required materials with your application. A complete application will include all the documents listed below.

- Completed and signed application form.
- Citizenship Attestation Form.
- One set of price quotes for the replacement motor, electrical equipment, installation, and electric utility connection and equipment costs including estimated delivery dates.
- All service quotes must include the location of the wellsite (township, range, section, and quarter-section).
- Documentation of ownership and annual engine operating hours for the previous two years (e.g. hour meter readings, diesel fuel purchase records, or maintenance records)
- Photographs of the wellsite and the entire diesel engine to be replaced.
- Closeup photo of the plate/label with the diesel engine serial number or manufacturer or dealer certification of the engine serial number and model year.
- Photograph of the diesel engine emissions label (if present) showing the EPA Engine Family (see below).

DIESEL ENGINE EMISSIONS LABEL AND EPA ENGINE FAMILY:

The EPA Engine Family is a 12-character (letters and numbers) identifier assigned when a diesel engine model is certified to comply with EPA emission standards. The first character in the EPA Engine Family name is a code for the model year of the engine. Some examples of diesel engine emission labels showing the EPA Engine Family are provided below. Engines older than 1996 do not have an EPA Engine Family identifier.



Some imported non-road diesel engines have not been EPA-certified. If the engine emissions label is missing or illegible, applicants should provide the engine serial number to the engine manufacturer or dealer to obtain written confirmation of the engine model year and submit that manufacturer's confirmation with their application.

RECIPIENT SELECTION

Applications will be evaluated based on meeting the eligibility requirements and the cost-effectiveness of the emissions reductions, as determined from the annual hours of operation, fuel use, and estimated remaining years of service of the replaced engine.

REBATE ACCEPTANCE:

1. All rebate recipients must sign a project agreement with NDEE.
2. When NDEE has received the signed agreement, you will be notified that you can complete the purchase of the new equipment and begin installation work. **NOTE: NDEE will not reimburse you for purchases made or services performed before the signed agreement is on file at NDEE.**

REIMBURSEMENT TIMELINE: By **June 30, 2026**, you must have completed the following:

1. Accept delivery of the new equipment and have it installed and operational
2. Scrap the old engine in accordance with the program requirements (see Scrappage section below)
3. Submit the Request for Reimbursement Form, Certification of Engine Scrappage form, IRS W-9 form, EPA MBE/WBE Utilization form, and all required supporting documentation once the new equipment has been purchased and installed.

When the reimbursement documents have been received, NDEE may perform an inspection. After the documents have been reviewed and approved, NDEE will issue the rebate funds.

Scrappage:

The old engine being replaced must be scrapped (permanently disabled) within 90 days of replacement and prior to submission of the reimbursement request to NDEE. Scrappage consists of cutting, drilling, or punching a 3" by 3" hole completely through the wall of the engine block into the cylinder area.

For complete scrappage documentation requirements, refer to the **Clean Diesel Rebate Program** web page at <http://dee.ne.gov/NDEQProg.nsf/OnWeb/NCDGP>.

SUBMITTING THE APPLICATION

Only signed and dated original applications received by mail or e-mail at the address below will be accepted. Rebate applications cannot be submitted by fax. **The application deadline is 5:00 pm January 16, 2025. Applications received or incomplete after 5:00 pm on January 16, 2025 will not be eligible.** The department is not responsible for any applications that are delayed or lost in the mail. Applicants will receive an e-mail confirming NDEE's receipt of the application. It is the applicant's responsibility to ensure that their application was received by the department by the respective deadline.

Mail or e-mail application to:

Nebraska ONE RED Irrigation Engine Program
Nebraska Department of Environment and Energy
P.O. Box 98922
Lincoln NE 68509-8922
NDEE.AirGrants@nebraska.gov

Questions? Email us at NDEE.AirGrants@nebraska.gov